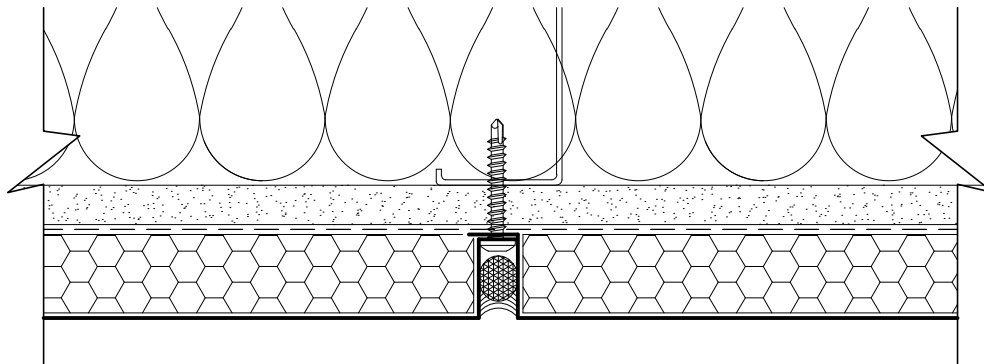




# SKYCORE



## PRODUCT DESCRIPTION:

Skyline Sheet Metal SKYCORE wall cladding panels are formed from heavy gauge aluminum or sheet steel backed with an aluminum honey comb stiffening core. The panels are mechanically attached with #10x1" square drive tek screws over a weather barrier to the stud framing of the structural wall. A finished 1/2" joint reveal is sealed with Dow 791 silicone to achieve a virtually watertight exterior cladding. .

## FEATURES and BENIFITS:

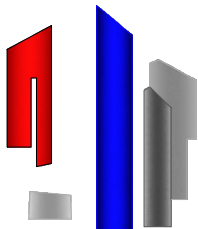
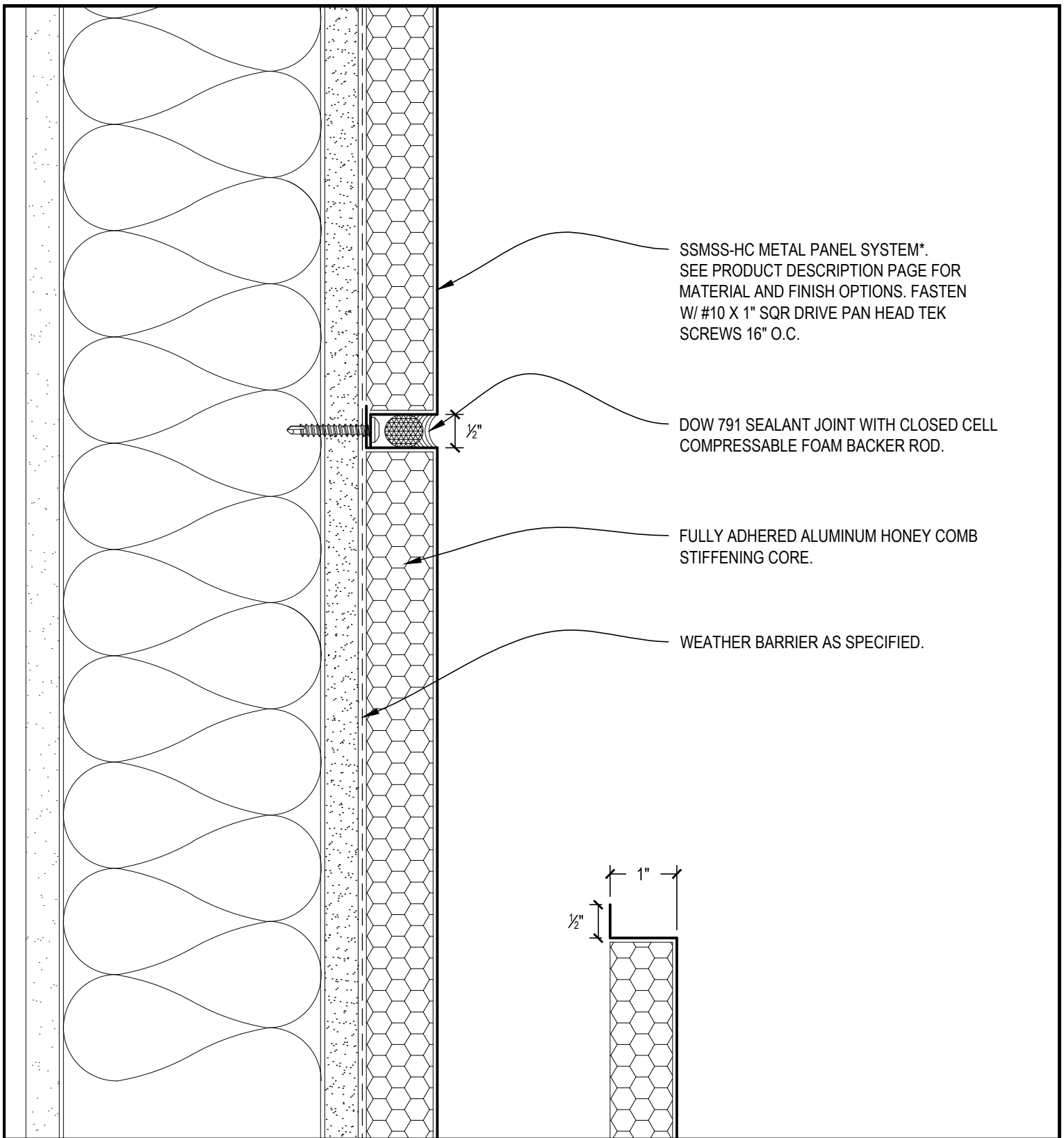
- Economical cost
- 20 year finish waranty
- Industry leading flatness and deflection control
- Lightweight

## MATERIAL and FINISH OPTIONS:

- Aluminum (.032-.040) Coil-coated Kynar 500 or Post-painted available in Std. and Custom colors
- Steel (22ga) Coil-coated Kynar 500 or Post-painted available in Std. and Custom colors
- Stainless Steel (22ga) Polished or Brushed
- Copper
- Zinc

[www.skylinesheetmetal.com](http://www.skylinesheetmetal.com)

1535 NW SUNDIAL RD TROUTDALE, OR 97060 PHONE 503-669-1156 FAX 503-666-8189



TYPICAL HORIZONTAL JOINT

SCALE: 6" = 1'-0"

SECTION VIEW

SKYCORE PANEL SYSTEM

SHEET

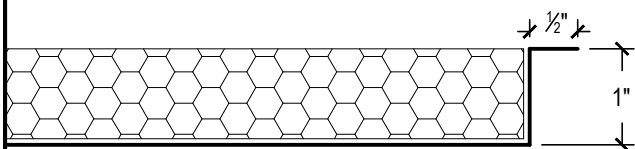
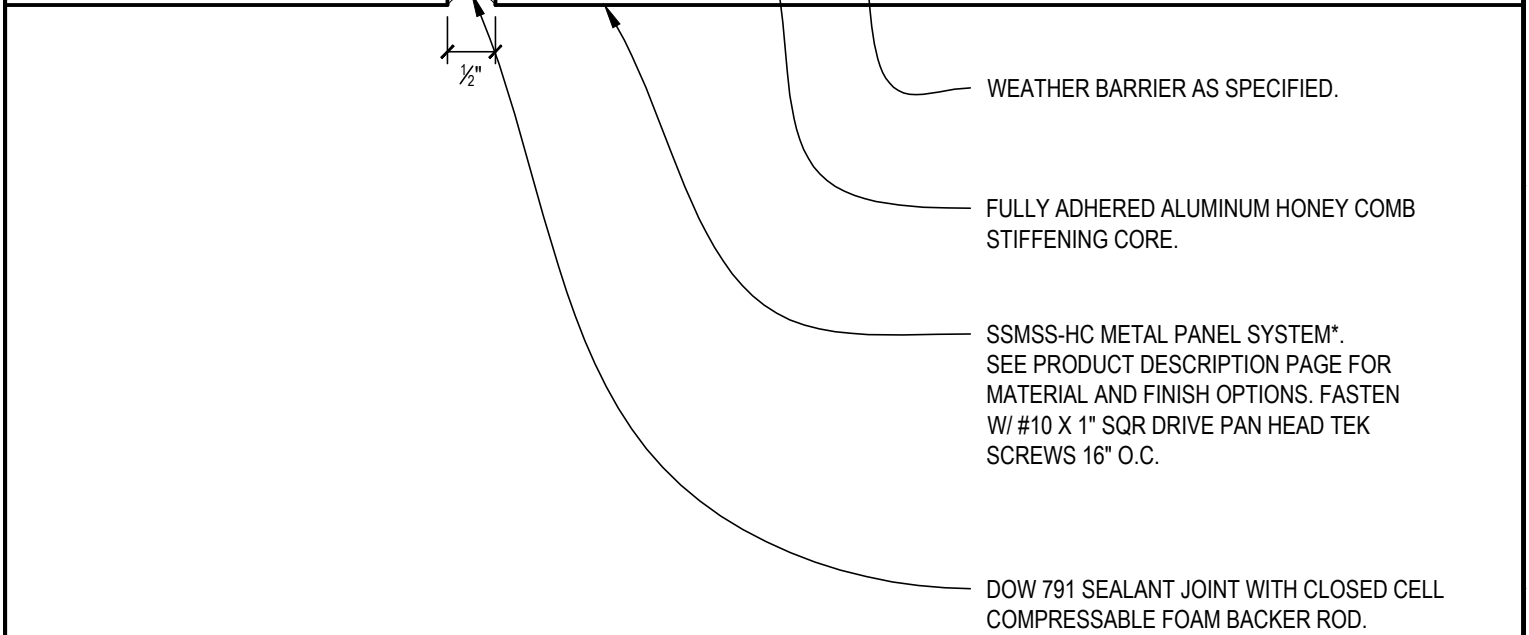
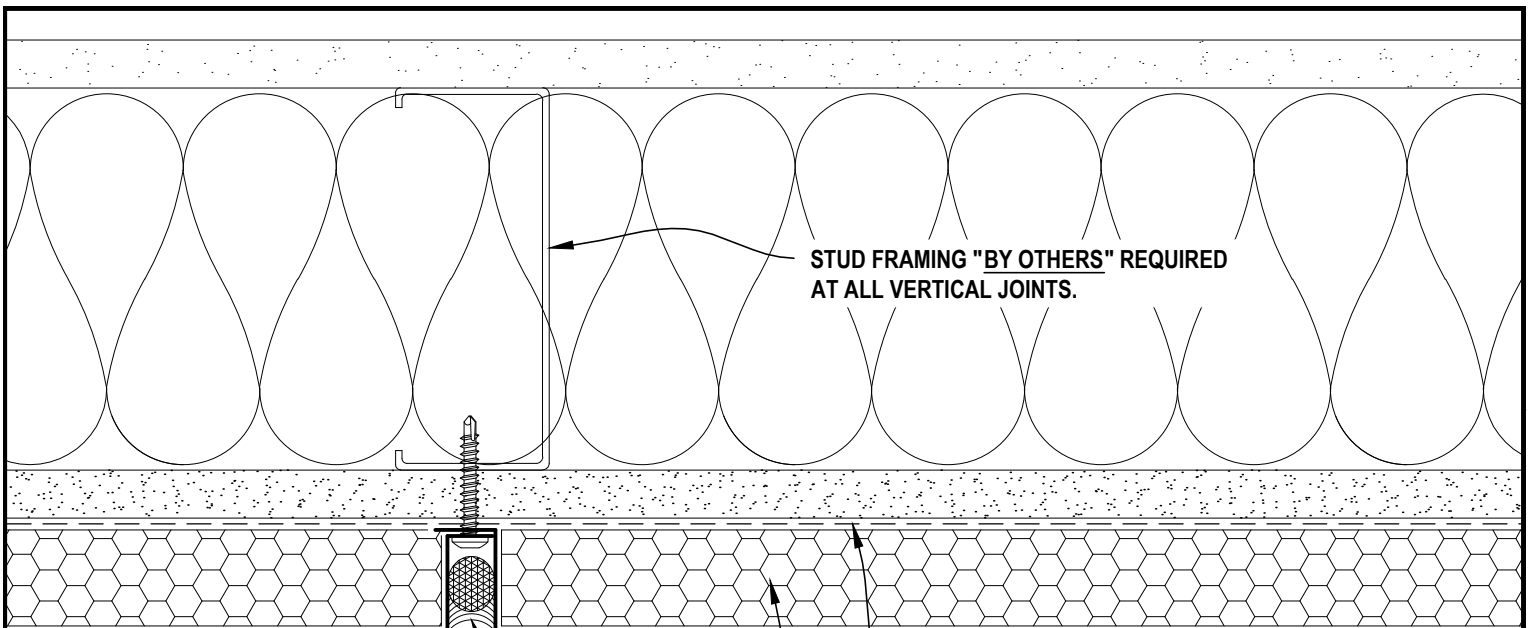


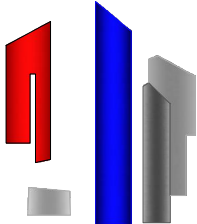
SKYLINE  
SHEET METAL

DATE: 01-01-2010

DRAWN: JASON YORK

1535 NW SUNDIAL RD TROUTDALE, OR 97060 PHONE 503-669-1156 FAX 503-666-8189





**SKYLINE**  
SHEET METAL

SKY LINE TYPICAL VERTICAL JOINT

SCALE: 6" = 1'-0"

PLAN VIEW

# SKYCORE PANEL SYSTEM

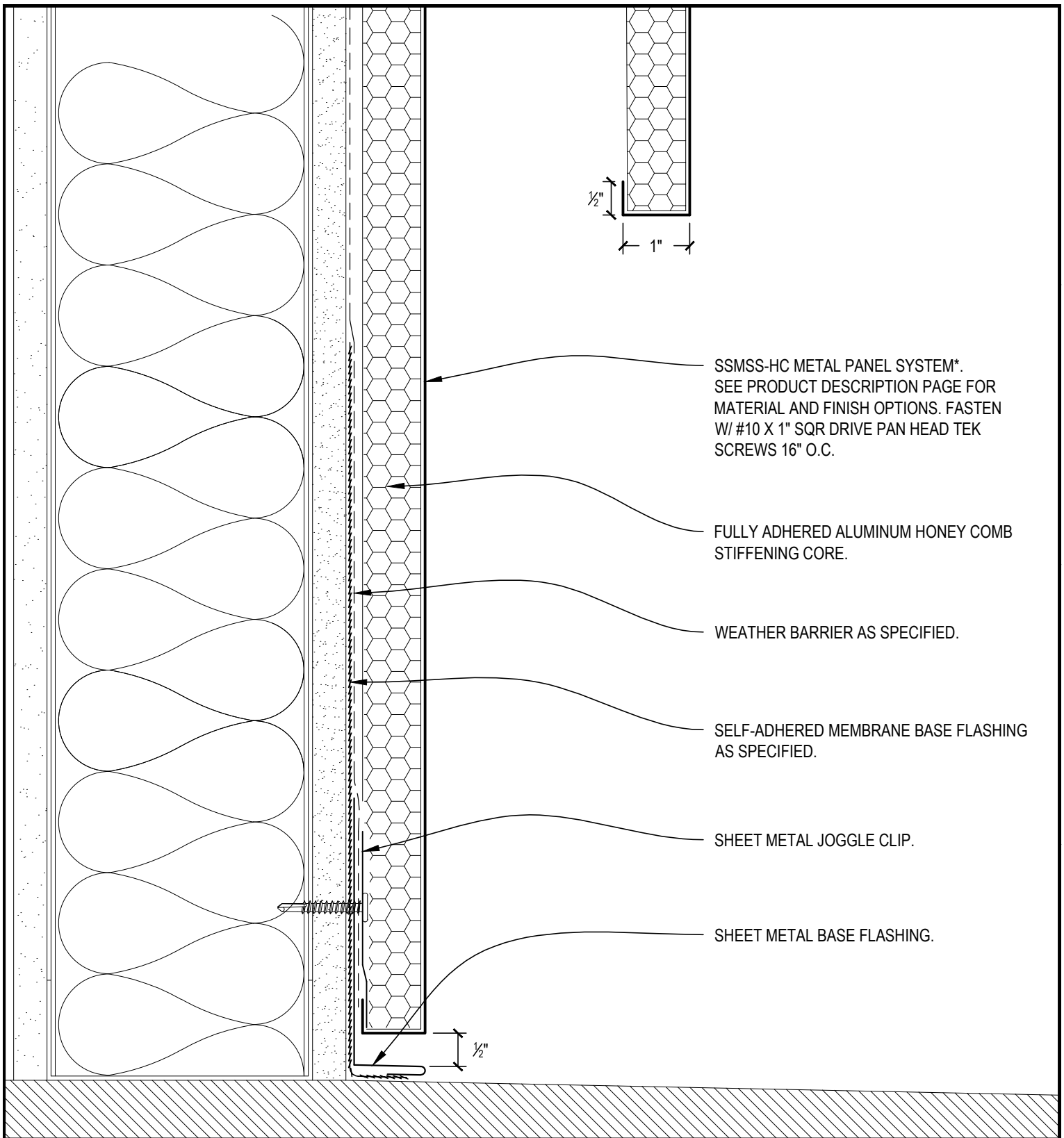
DATE: 01-01-2010

1535 NW SUNDIAL RD TROUTDALE, OR 97060 PHONE 503-669-1156 FAX 503-666-8189

DRAWN: JASON YORK

SHEET

2



SSMSS-HC METAL PANEL SYSTEM\*.  
SEE PRODUCT DESCRIPTION PAGE FOR  
MATERIAL AND FINISH OPTIONS. FASTEN  
W/ #10 X 1" SQR DRIVE PAN HEAD TEK  
SCREWS 16" O.C.

FULLY ADHERED ALUMINUM HONEY COMB  
STIFFENING CORE.

WEATHER BARRIER AS SPECIFIED.

SELF-ADHERED MEMBRANE BASE FLASHING  
AS SPECIFIED.

SHEET METAL JOGGLE CLIP.

SHEET METAL BASE FLASHING.



SKY  
LINE

TYPICAL PANEL @ GRADE

SCALE: 6" = 1'-0"

SECTION VIEW

SHEET

SKYCORE PANEL SYSTEM

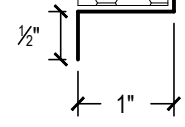
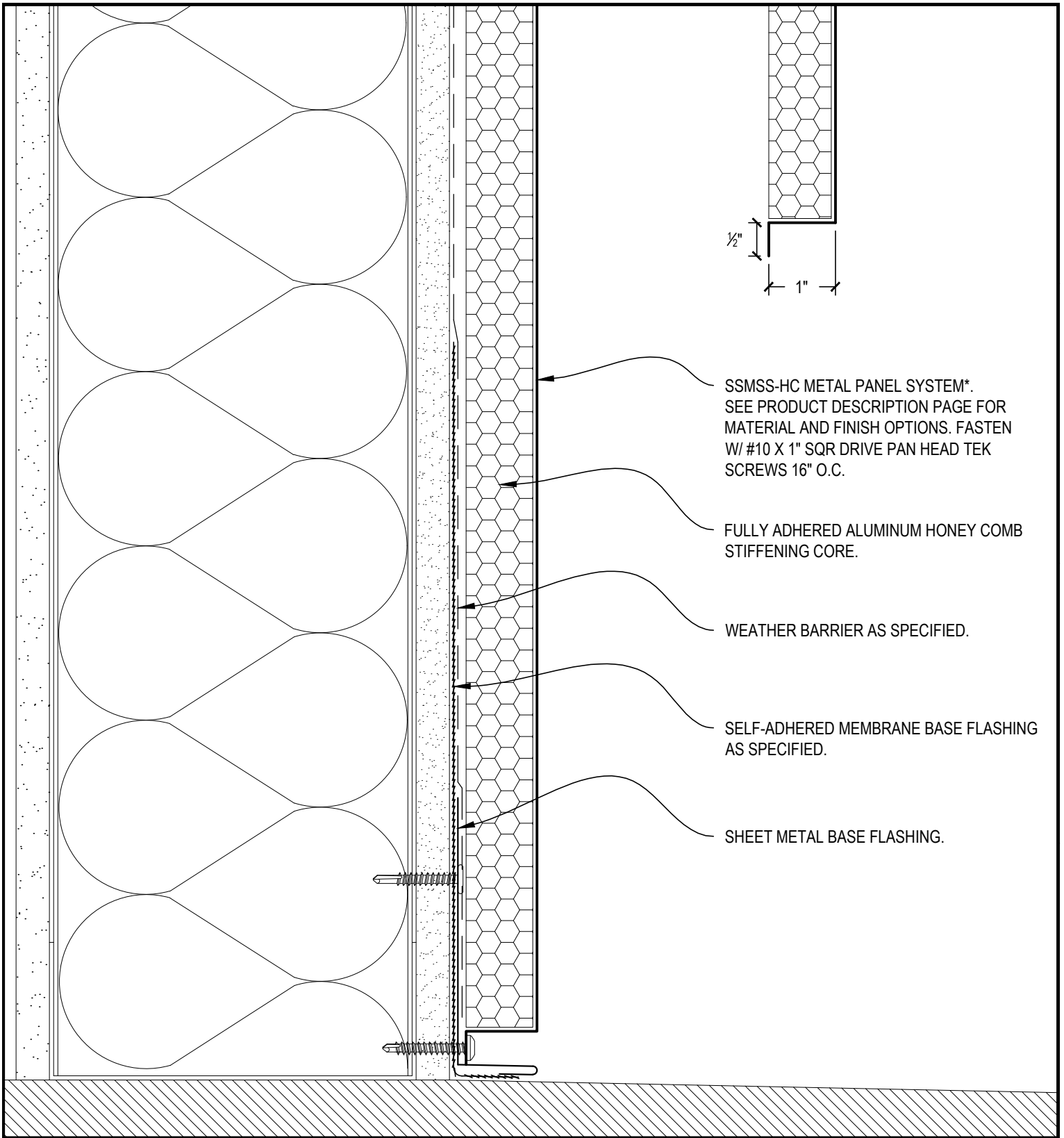


SKYLINE  
SHEET METAL

DATE: 01-01-2010

DRAWN: JASON YORK

1535 NW SUNDIAL RD TROUTDALE, OR 97060 PHONE 503-669-1156 FAX 503-666-8189



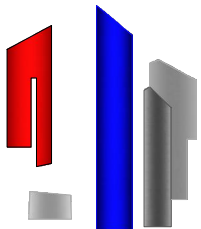
SSMSS-HC METAL PANEL SYSTEM\*.  
SEE PRODUCT DESCRIPTION PAGE FOR  
MATERIAL AND FINISH OPTIONS. FASTEN  
W/ #10 X 1" SQR DRIVE PAN HEAD TEK  
SCREWS 16" O.C.

FULLY ADHERED ALUMINUM HONEY COMB  
STIFFENING CORE.

WEATHER BARRIER AS SPECIFIED.

SELF-ADHERED MEMBRANE BASE FLASHING  
AS SPECIFIED.

SHEET METAL BASE FLASHING.



PANEL @ GRADE--OPTION -A-

SCALE: 6" = 1'-0"

SECTION VIEW

SHEET

SKYCORE PANEL SYSTEM

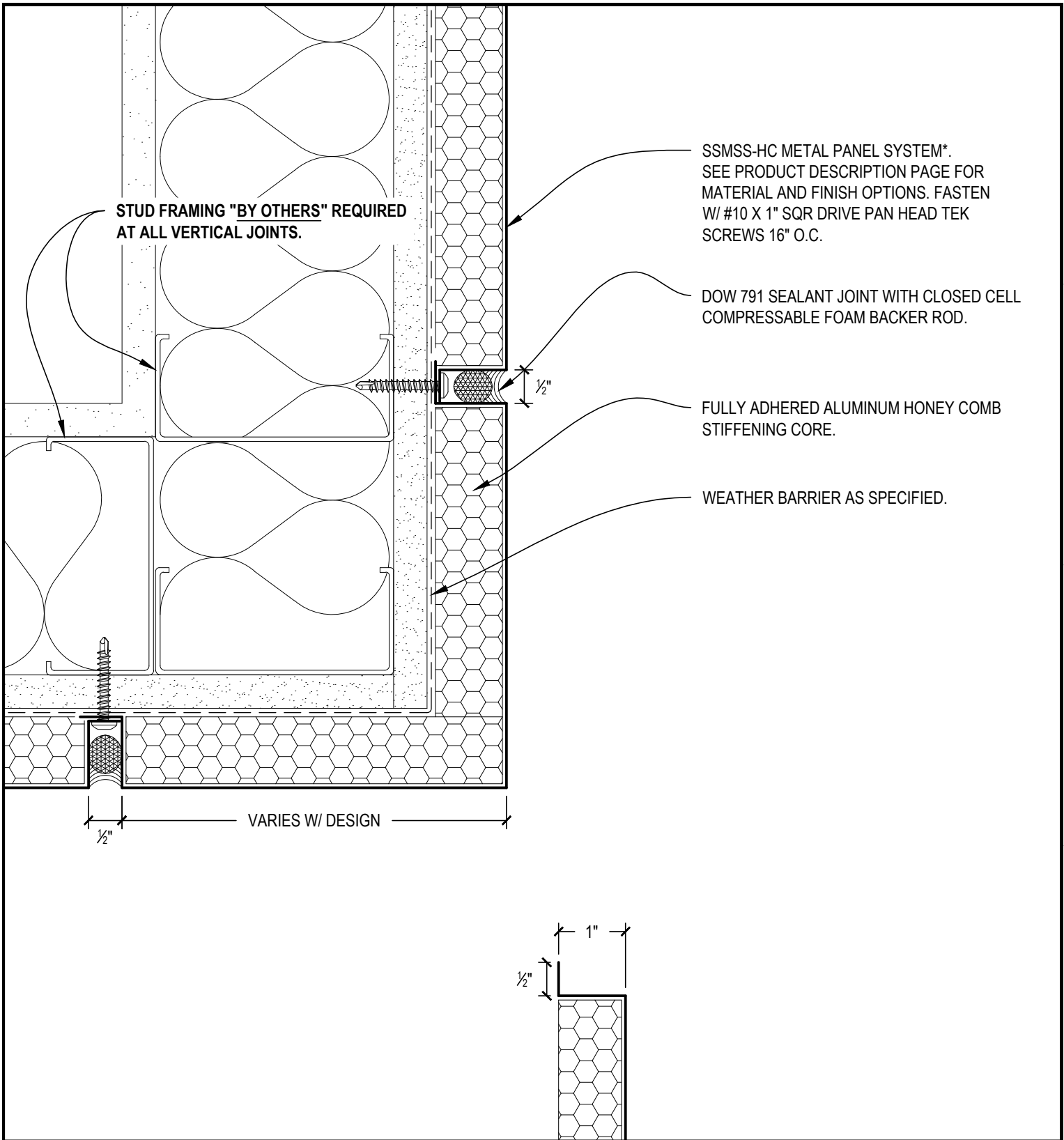


**SKYLINE**  
SHEET METAL

DATE: 01-01-2010

DRAWN: JASON YORK

1535 NW SUNDIAL RD TROUTDALE, OR 97060 PHONE 503-669-1156 FAX 503-666-8189



SKY  
LINE

TYPICAL OUTSIDE CORNER

SCALE: 6" = 1'-0"

PLAN VIEW

---

# SKYCORE PANEL SYSTEM

SHEET

**SKYLINE**  
SHEET METAL

DATE: 01-01-2010

DRAWN: JASON YORK

1535 NW SUNDIAL RD TROUTDALE, OR 97060 PHONE 503-669-1156 FAX 503-666-8189

STUD FRAMING "BY OTHERS" REQUIRED  
AT ALL VERTICAL JOINTS.

VARIES W/ DESIGN

1/2"

SSMSS-HC METAL PANEL SYSTEM\*.  
SEE PRODUCT DESCRIPTION PAGE FOR  
MATERIAL AND FINISH OPTIONS. FASTEN  
W/ #10 X 1" SQR DRIVE PAN HEAD TEK  
SCREWS 16" O.C.

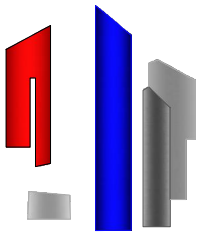
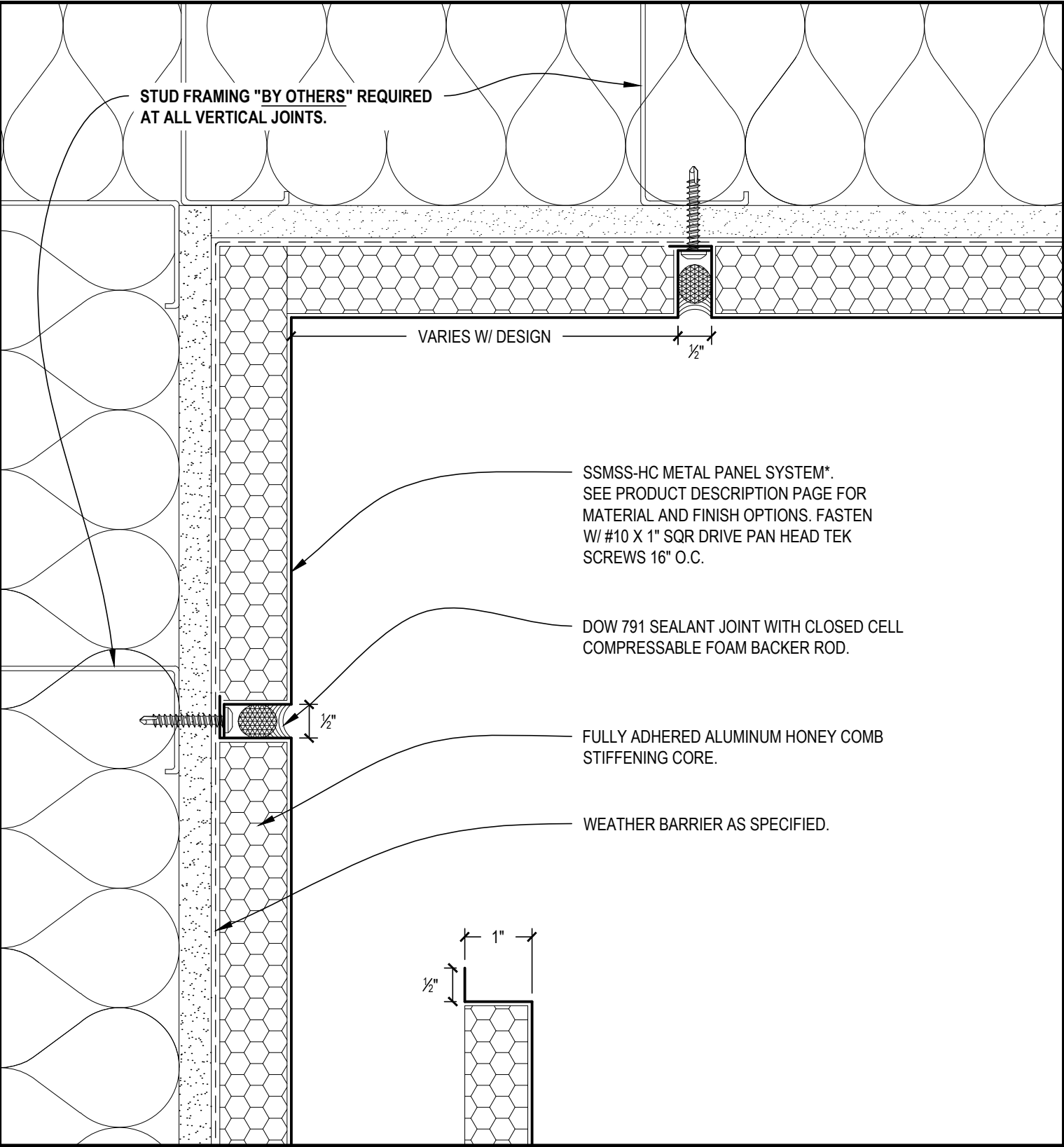
DOW 791 SEALANT JOINT WITH CLOSED CELL  
COMPRESSABLE FOAM BACKER ROD.

FULLY ADHERED ALUMINUM HONEY COMB  
STIFFENING CORE.

WEATHER BARRIER AS SPECIFIED.

1/2"

1"  
1/2"



TYPICAL INSIDE CORNER

SCALE: 6" = 1'-0"

PLAN VIEW

SKYCORE PANEL SYSTEM

SHEET

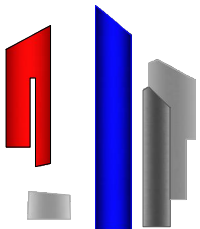
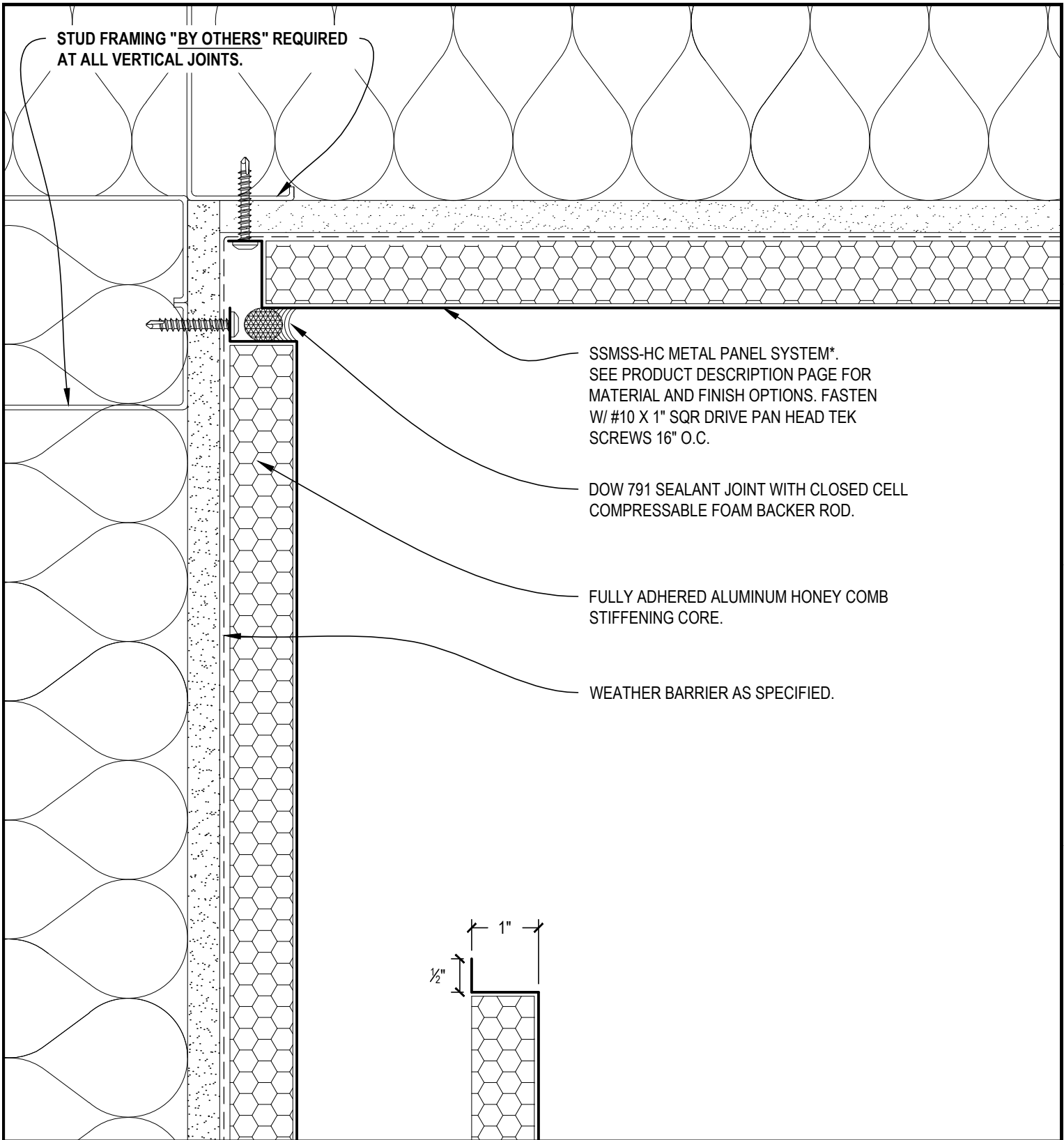


SKYLINE  
SHEET METAL

DATE: 01-01-2010

DRAWN: JASON YORK

1535 NW SUNDIAL RD TROUTDALE, OR 97060 PHONE 503-669-1156 FAX 503-666-8189



INSIDE CORNER--OPTION -A-

SCALE: 6" = 1'-0"

PLAN VIEW

# SKYCORE PANEL SYSTEM

SHEET



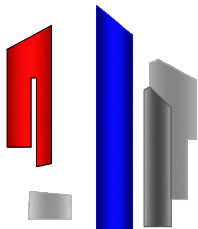
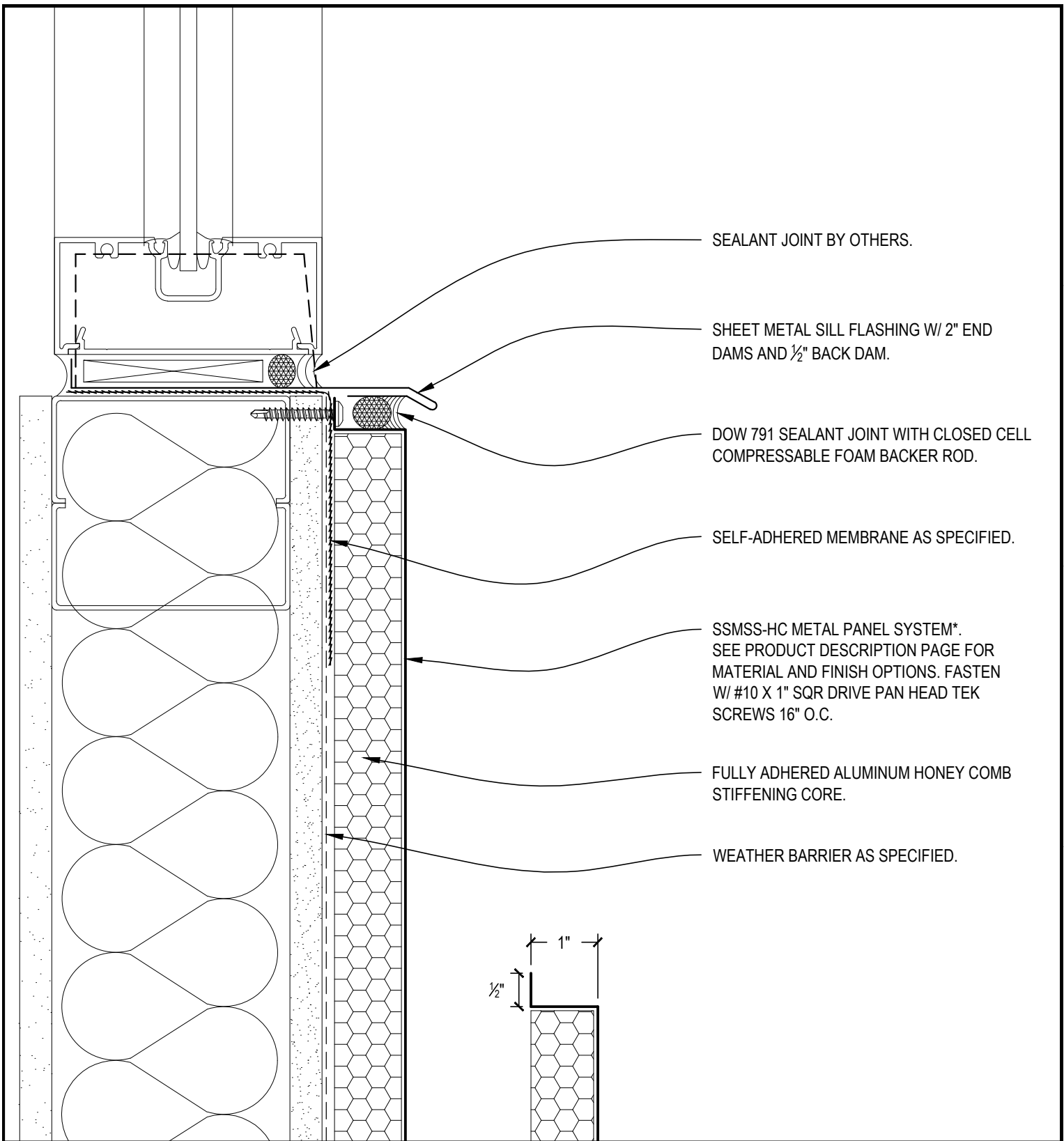
**SKYLINE**  
SHEET METAL

DATE: 01-01-2010

DRAWN: JASON YORK

1535 NW SUNDIAL RD TROUTDALE, OR 97060 PHONE 503-669-1156 FAX 503-666-8189





TYPICAL WINDOW SILL

SCALE: 6" = 1'-0"

SECTION VIEW

SHEET

SKYCORE PANEL SYSTEM

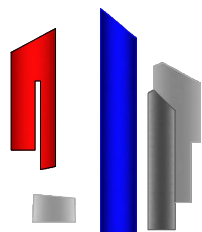
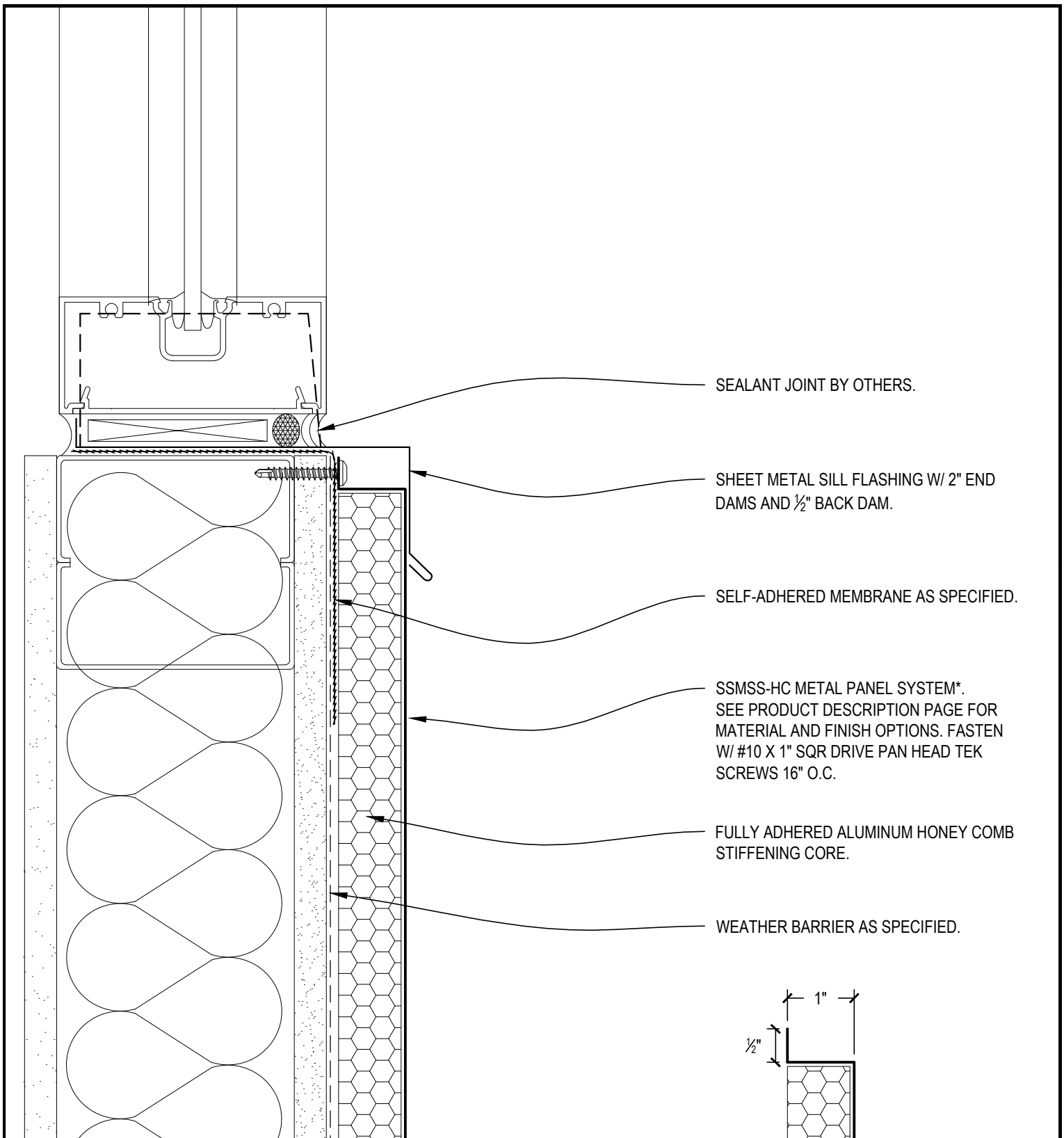


SKYLINE  
SHEET METAL

DATE: 01-01-2010

DRAWN: JASON YORK

1535 NW SUNDIAL RD TROUTDALE, OR 97060 PHONE 503-669-1156 FAX 503-666-8189



WINDOW SILL--OPTION -A-

SCALE: 6" = 1'-0"

SECTION VIEW

SHEET

SKYCORE PANEL SYSTEM

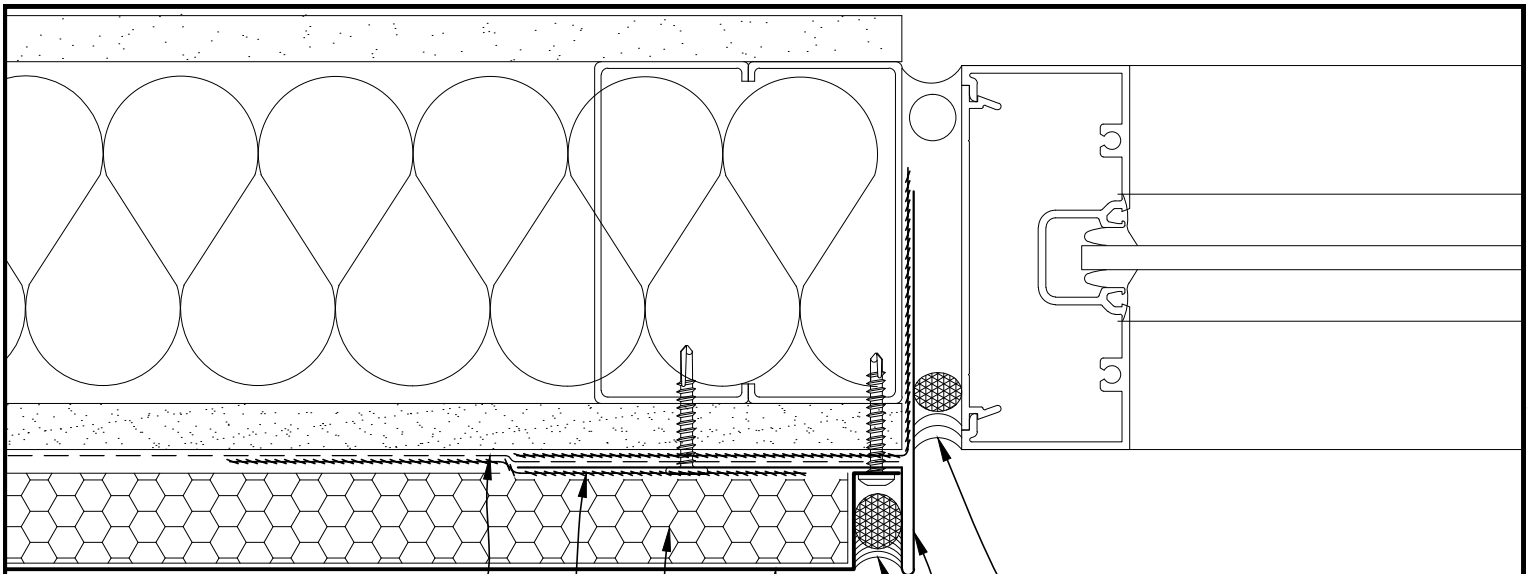


SKYLINE SHEET METAL

DATE: 01-01-2010

DRAWN: JASON YORK

1535 NW SUNDIAL RD TROUTDALE, OR 97060 PHONE 503-669-1156 FAX 503-666-8189



WEATHER BARRIER AS SPECIFIED.

SELF-ADHERED MEMBRANE TO STRIP IN JAMB FLASHING AS SPECIFIED.

FULLY ADHERED ALUMINUM HONEY COMB STIFFENING CORE.

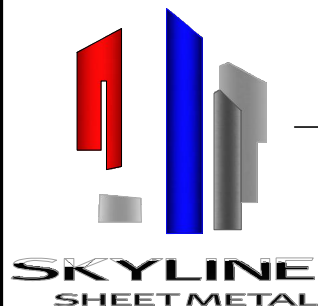
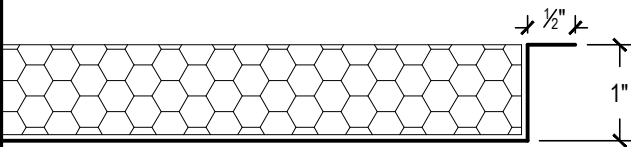
SSMSS-HC METAL PANEL SYSTEM\*.  
SEE PRODUCT DESCRIPTION PAGE FOR MATERIAL AND FINISH OPTIONS. FASTEN W/ #10 X 1" SQR DRIVE PAN HEAD TEK SCREWS 16" O.C.

SEALANT JOINT BY OTHERS.

PREFINISHED SHEET METAL JAMB FLASHING.

DOW 791 SEALANT JOINT WITH CLOSED CELL COMPRESSABLE FOAM BACKER ROD.

1/2"



TYPICAL WINDOW JAMB

SCALE: 6" = 1'-0"

PLAN VIEW

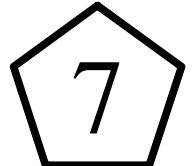
SKYCORE PANEL SYSTEM

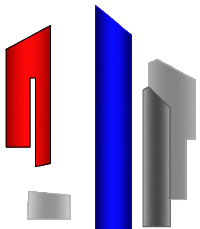
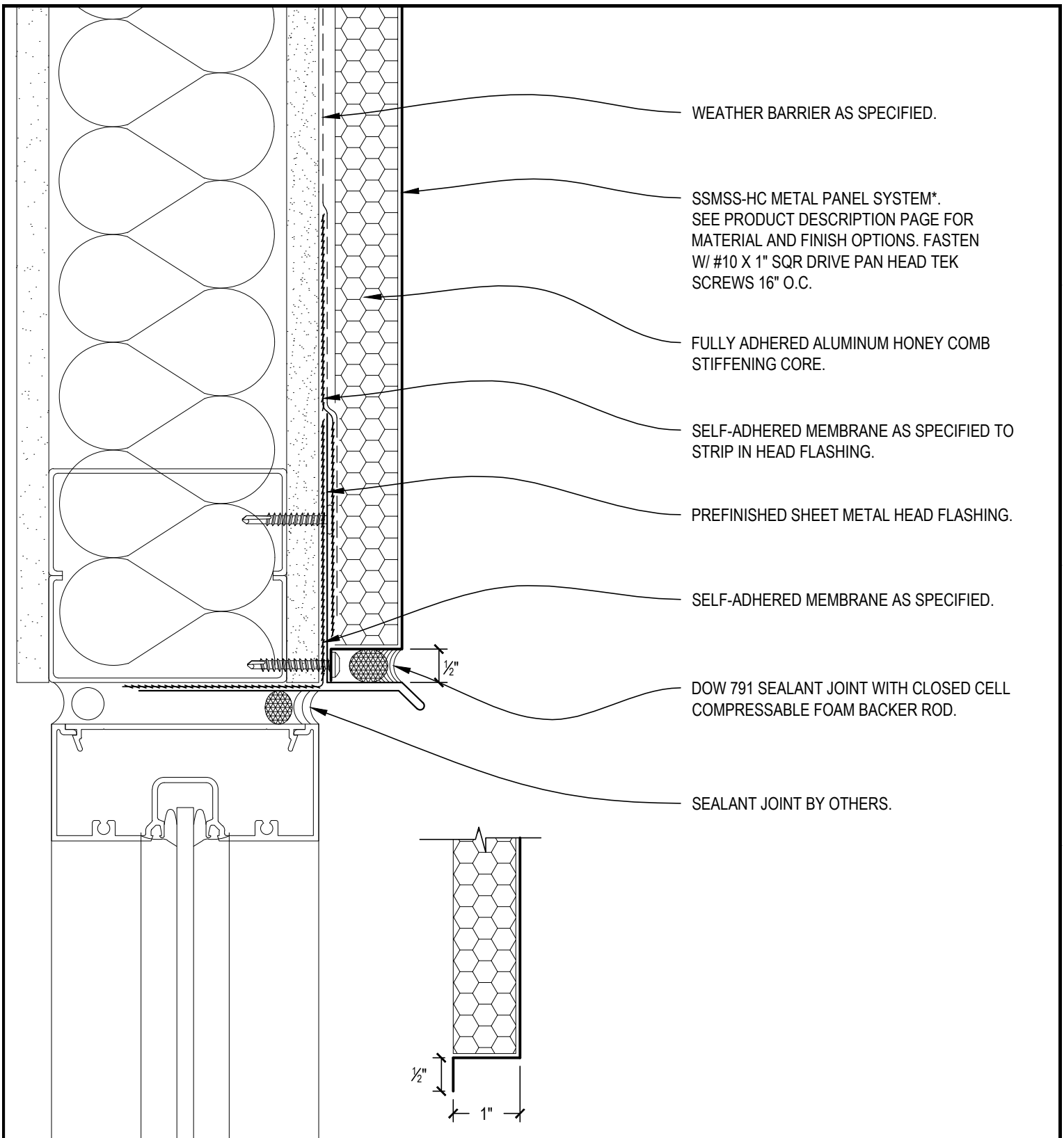
DATE: 01-01-2010

DRAWN: JASON YORK

1535 NW SUNDIAL RD TROUTDALE, OR 97060 PHONE 503-669-1156 FAX 503-666-8189

SHEET





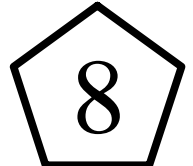
TYPICAL WINDOW HEAD

SCALE: 6" = 1'-0"

SECTION VIEW

SHEET

SKYCORE PANEL SYSTEM

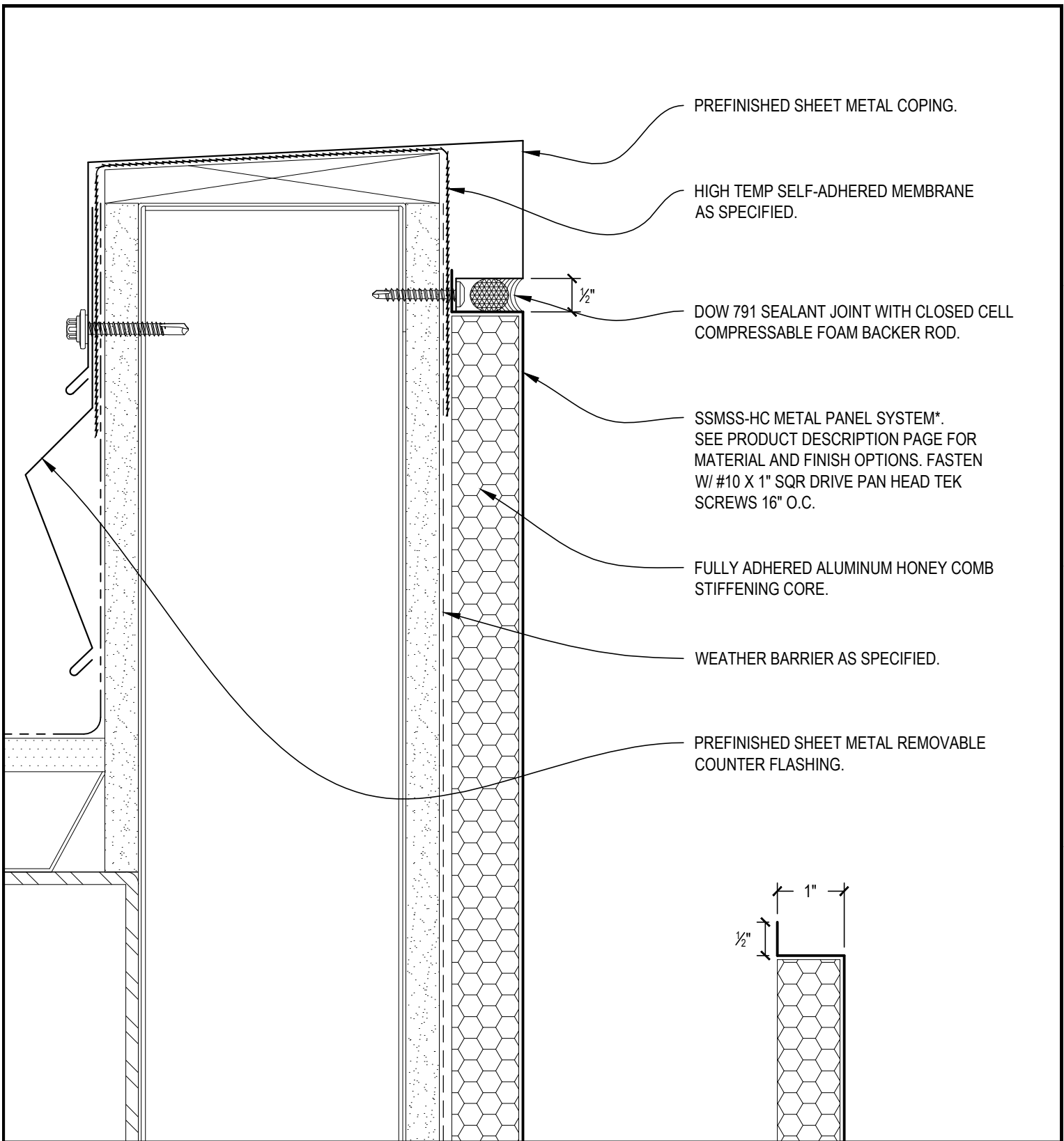


SKYLINE  
SHEET METAL

DATE: 01-01-2010

DRAWN: JASON YORK

1535 NW SUNDIAL RD TROUTDALE, OR 97060 PHONE 503-669-1156 FAX 503-666-8189



PREFINISHED SHEET METAL COPING.

HIGH TEMP SELF-ADHERED MEMBRANE AS SPECIFIED.

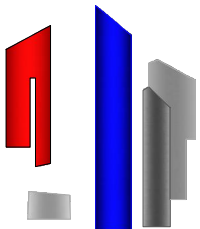
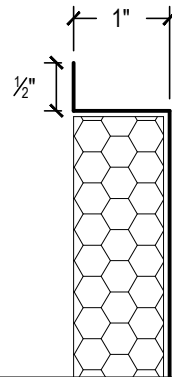
DOW 791 SEALANT JOINT WITH CLOSED CELL COMPRESSABLE FOAM BACKER ROD.

SSMSS-HC METAL PANEL SYSTEM\*. SEE PRODUCT DESCRIPTION PAGE FOR MATERIAL AND FINISH OPTIONS. FASTEN W/ #10 X 1" SQR DRIVE PAN HEAD TEK SCREWS 16" O.C.

FULLY ADHERED ALUMINUM HONEY COMB STIFFENING CORE.

WEATHER BARRIER AS SPECIFIED.

PREFINISHED SHEET METAL REMOVABLE COUNTER FLASHING.



TYPICAL PARAPET CAP

SCALE: 6" = 1'-0"

SECTION VIEW

SHEET

SKYCORE PANEL SYSTEM

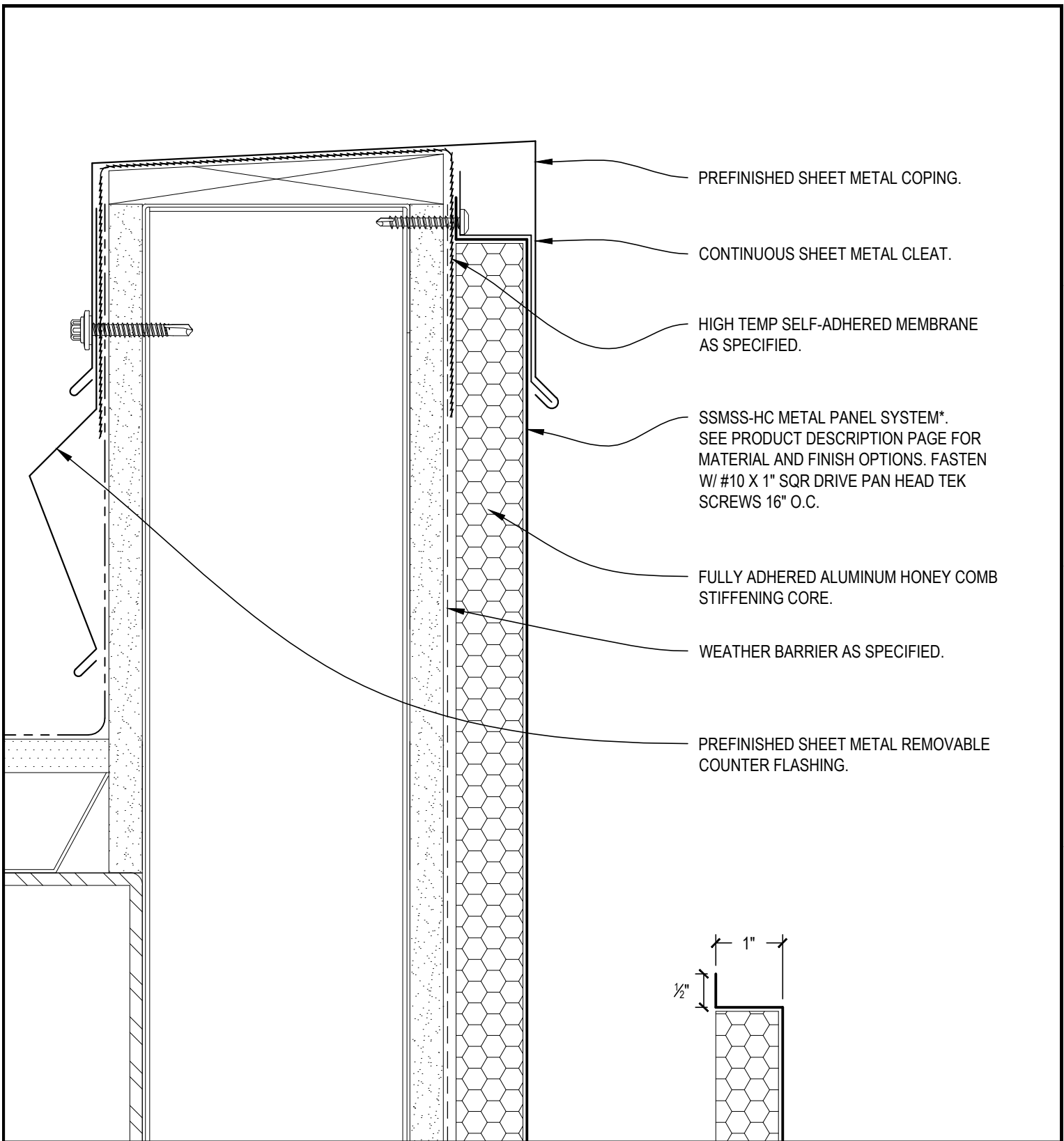


SKYLINE SHEET METAL

DATE: 01-01-2010

DRAWN: JASON YORK

1535 NW SUNDIAL RD TROUTDALE, OR 97060 PHONE 503-669-1156 FAX 503-666-8189



SKY  
LINE

PARAPET CAP--OPTION -A-  
SCALE: 6" = 1'-0"

SECTION VIEW

SHEET

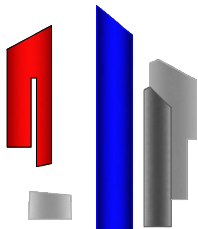
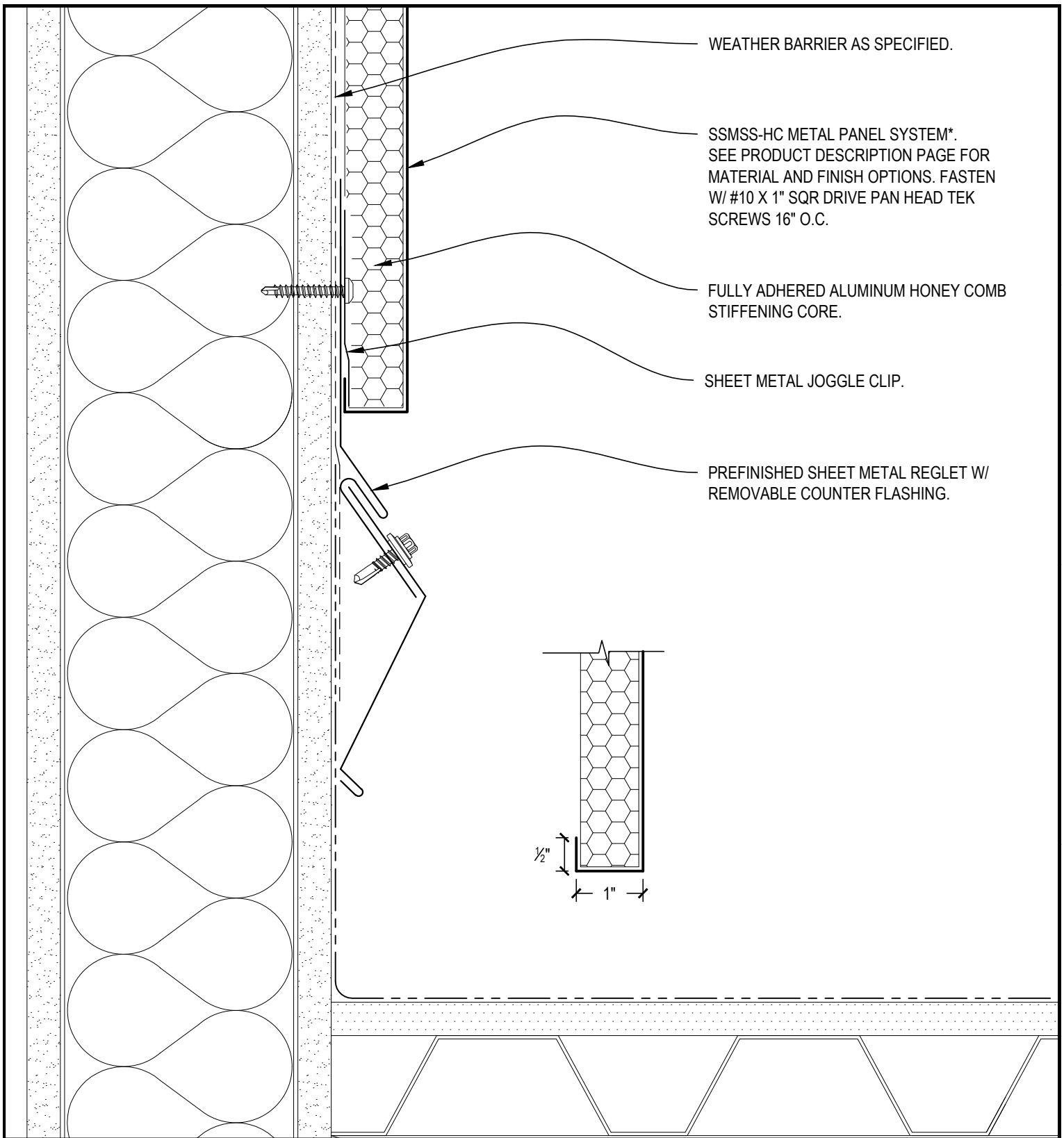
# SKYCORE PANEL SYSTEM

**SKYLINE**  
SHEET METAL

DATE: 01-01-2010

DRAWN: JASON YORK

1535 NW SUNDIAL RD TROUTDALE, OR 97060 PHONE 503-669-1156 FAX 503-666-8189



TYPICAL PANEL @ ROOF

SCALE: 6" = 1'-0"

SECTION VIEW

SHEET

SKYCORE PANEL SYSTEM

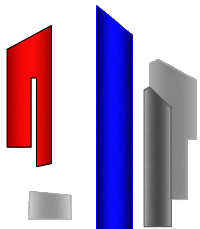
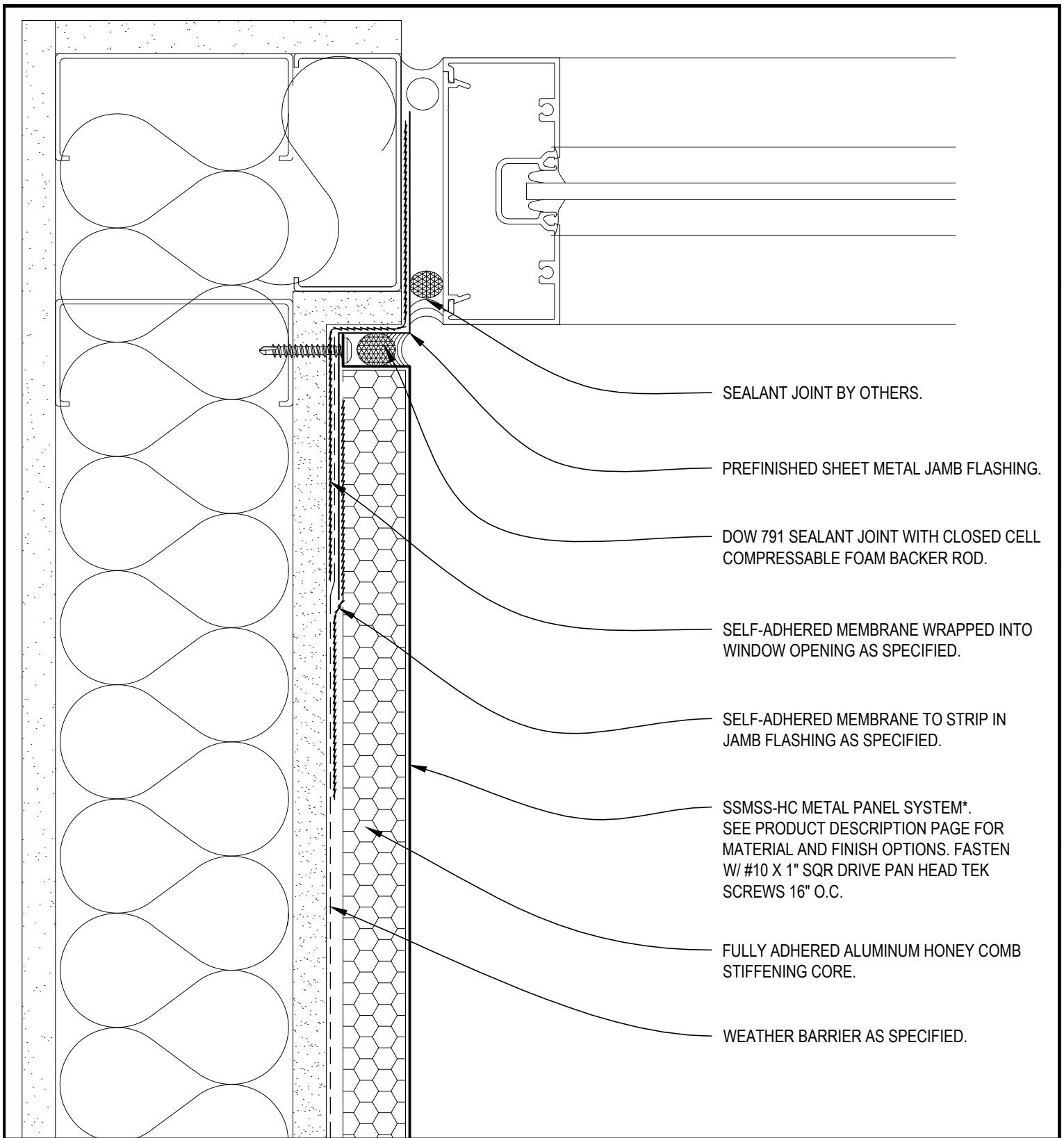
10

SKYLINE  
SHEET METAL

DATE: 01-01-2010

DRAWN: JASON YORK

1535 NW SUNDIAL RD TROUTDALE, OR 97060 PHONE 503-669-1156 FAX 503-666-8189



**INSIDE CORNER WINDOW JAMB**

SCALE: 6" = 1'-0"

SECTION VIEW

**SHEET**

**SKYCORE PANEL SYSTEM**

**11**

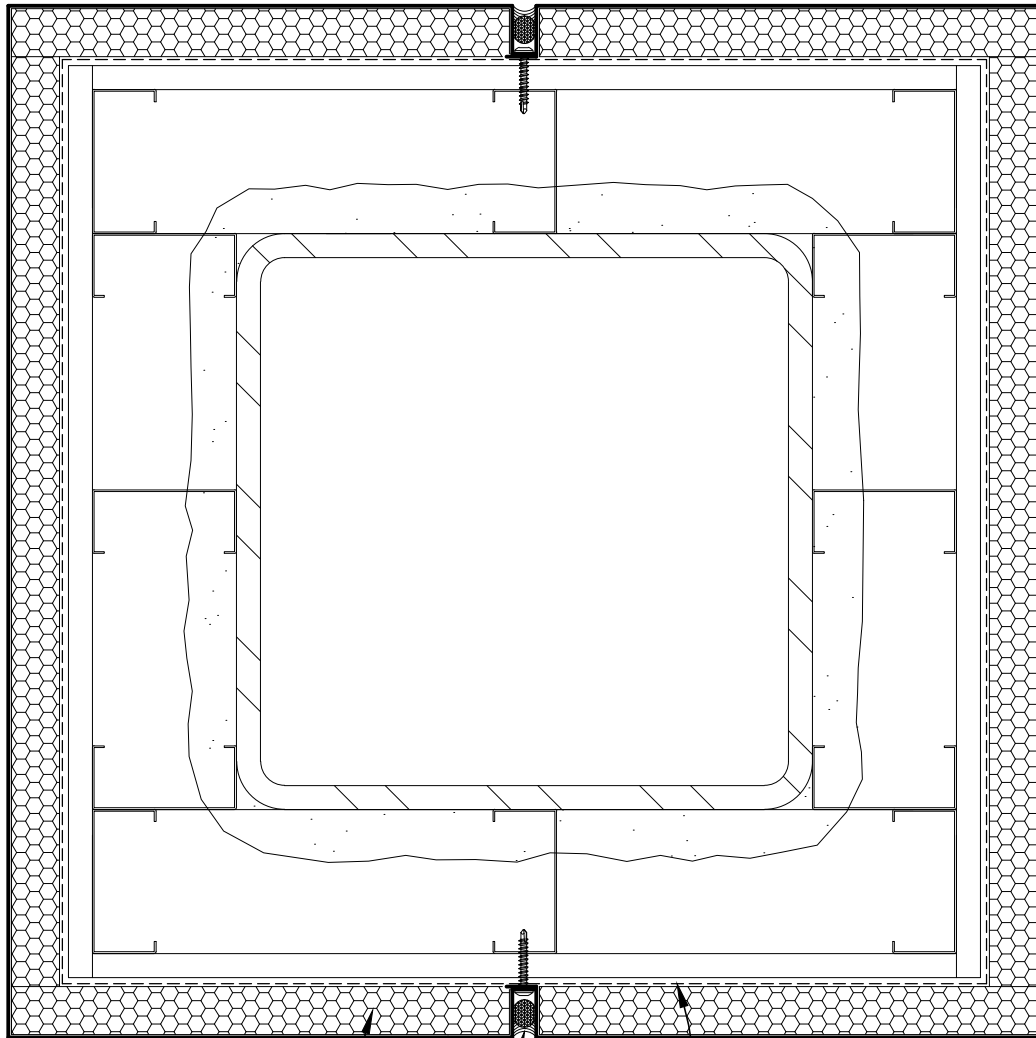
**SKYLINE**  
SHEET METAL

DATE: 01-01-2010

DRAWN: JASON YORK

1535 NW SUNDIAL RD TROUTDALE, OR 97060 PHONE 503-669-1156 FAX 503-666-8189





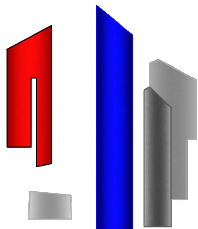
FULLY ADHERED ALUMINUM HONEY COMB STIFFENING CORE.

SSMSS-HC METAL PANEL SYSTEM\*. SEE PRODUCT DESCRIPTION PAGE FOR MATERIAL AND FINISH OPTIONS. FASTEN W/ #10 X 1" SQR DRIVE PAN HEAD TEK SCREWS 16" O.C.

DOW 791 SEALANT JOINT WITH CLOSED CELL COMPRESSABLE FOAM BACKER ROD.

WEATHER BARRIER AS SPECIFIED.

1/2"



TYPICAL COLUMN WRAP

SCALE: 6" = 1'-0"

SECTION VIEW

SKYCORE PANEL SYSTEM

SHEET

12

SKYLINE SHEET METAL

DATE: 01-01-2010

DRAWN: JASON YORK

1535 NW SUNDIAL RD TROUTDALE, OR 97060 PHONE 503-669-1156 FAX 503-666-8189